

# FARO® Gage



## 1.2m (48") Working Volume

*Ideal for all your small parts, moulds and assemblies.*

## Temperature & Overload Sensors

*Allow the Gage to 'sense' and react to thermal variations and improper handling for maximum accuracy.*

## Multi-Probe Capability

*Including various ball diameters, touch-sensitive, curved, and extensions.*

## Internal Counterbalancing

*Allows the user to move the Gage easily with one hand without becoming fatigued.*

## Extended-Use Battery (Optional)

*provides true 'measure anywhere' capability.*

## NEW — Bluetooth® Cable-Free Operation

*Inspect and digitise wirelessly up to 10m (30ft.) away.*

## Universal 3.5" Quick Mount

*Offers 'mount-it-to-where-you-make-it' convenience and less downtime.*

## A Personal CMM!

The FARO Gage is the industry's first line of personal Coordinate Measuring Machines (CMMs). With its 1.2m (48") working volume, it is the 'mount-it-to-where-you-make-it', truly portable, cost-effective, 3D, minimal-training gages for machinists. The FARO Gage replaces all conventional gaging devices with an expandable library of gaging tools. Save time and money by replacing your cluttered inspection area with the one tool that can do it all.

## Most Common Applications

**Aerospace:** Repair & Refit • **Tool & Die:** Master Moulds, Tool Setup • **Automotive:** Body in White, Functional Build • **Castings & Mouldmaking:** Pre-Cast Mould, Composite Tooling

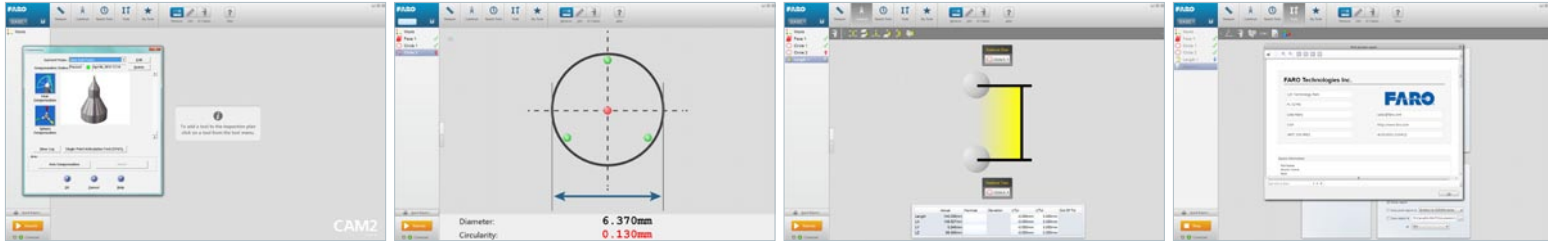
## Features

- ▶ HIGH accuracy
- ▶ Portable and easier-to-use than a fixed CMM
- ▶ Mount and measure parts in process
- ▶ Up to 0.018mm ( $\pm 0.0007''$ ) accuracy
- ▶ Generate GD&T & SPC reports

## CAM2 GAGE Software

The CAM2 GAGE Software is FARO's CAM2 solution for measuring basic geometry and building dimensions. It allows you to quickly measure geometric features on your part so that you can easily report the dimensions you need to control.

Additionally, once you have measured one complete part, you can then repeat the same measurements on the next part with no additional effort. Add images to your Inspection Plan and hand over the Inspection Plan to any operator.



Setup your FARO Gage or FaroArm

Start the Measure-> Circle command

Run the Construct->Length->Point to Point command

Report

## Performance Specifications

Measuring range	Volumetric maximum deviation	Single point articulation performance test (Max-Min)/2	FARO Gage weight
1.2m (4ft.)	±0.025 mm (±0.001 in.)	0.018 mm (0.0007 in.)	9.1kg (20.0lbs.)

FARO Gage test methods - (Test methods are a subset of those given in the B89.4.22 standard.). Single point articulation performance test (Max-Min)/2: The probe of the FARO Gage is placed within a conical socket, and individual points are measured from multiple approach directions. Each individual point measurement is analysed as a range of deviations in X, Y, Z. This test is a method for determining articulating measurement machine repeatability. Volumetric maximum deviation: Determined by using traceable length artifacts, which are measured at various locations and orientations throughout the working volume of the FARO Gage. This test is a method for determining articulating measurement machine accuracy.

## Hardware Specifications

**Operating temp range:** 10°C - 40°C (50°F - 104°F)

**Temperature rate:** 3°C/5min. (5.4°F/5min.)

**Operating humidity range:** 95%, noncondensing

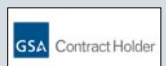
**Power supply:** Universal worldwide voltage 85-245VAC, 50/60Hz

**Certifications:** MET (UL, CSA Certified) • CE compliance • Directive 93/68/EEC, (CE Marking) • Directive 89/336/EEC, (EMC) • FDA CDRH, Subchapter J of 21 CFR 1040.10 • Elec-

trical Equipment for Measurement, Control & Lab Use • EN 61010-1:2001, IEC 60825-1, EN 61326 • Electromagnetic Compatibility (EMC) • EN 55011, EN 61000-3-2, EN 61000-3-3, EN 61000-4-4, EN 61000-4-5, EN 61000-4-6, EN 61000-4-8, EN 61000-4-11 • Pat. 5402582, 5611147, 5794356, 6366831, 6606539, 6904691, 6925722, 6935036, 6973734, 6988322, 7032321, 7043847, 7051450, 7069664, 7269910, D607350

FARO offers optional VDI/VDE 2617-9 certification for an additional charge. Please ask your sales representative for details.

FARO, THE MEASURE OF SUCCESS, FaroArm, CAM2, ION, and FARO Laser ScanArm are registered trademarks and trademarks of FARO Technologies Inc. © 2011 FARO Technologies Inc. All Rights Reserved.



Global Offices: Australia • Brazil • China • France • Germany • India • Italy • Japan • Malaysia • Mexico • Netherlands • Philippines • Poland  
Portugal • Singapore • Spain • Switzerland • Thailand • Turkey • United Kingdom • USA • Vietnam